



Submittal Data Information

FI Series Pumps

301-2416

EFFECTIVE: January 10, 2016

SUPERSEDES: July 1, 2015

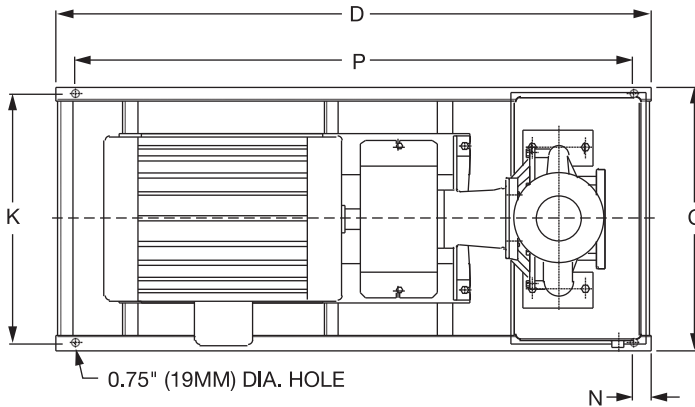
1760 RPM MODEL 1509C

JOB _____ ENGINEER _____

CONTRACTOR _____ REP. _____

ITEM NO.	MODEL NO.	IMPELLER DIA.	G.P.M.	HEAD/FT.	H.P.	ELEC. CHAR.
----------	-----------	---------------	--------	----------	------	-------------

WEIGHT _____ PUMP/MOTOR _____



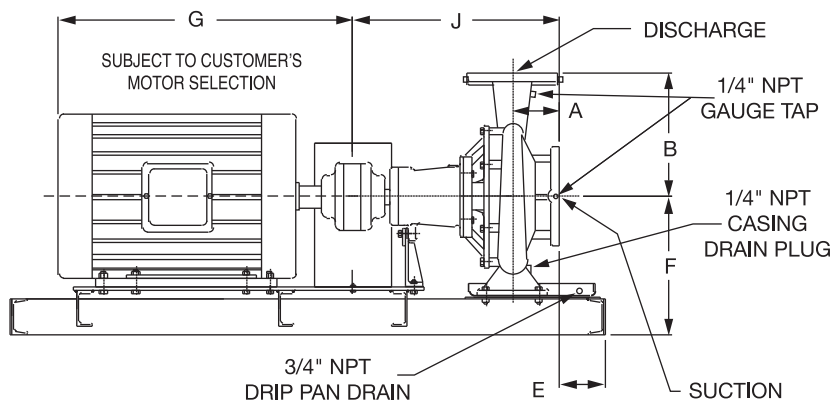
OPERATING SPECIFICATIONS

	Standard	Optional
Flange	ANSI Class 125	ANSI Class 250
Pressure	175 PSIG* (1210 KPA)	300 PSIG** (2070 KPA)
Temperature	250°F (120°C)	250°F (120°C)

Motors: All NEMA Standard (T Frame)
 * In accordance with ANSI Standard B16.1 Class 125
 ** In accordance with ANSI Standard B16.1 Class 250 Dim.

MAXIMUM ASSEMBLY WEIGHT

Motor Frame	Weight Lbs (Kg)
143T - 145T	369 (167)
182T - 184T	420 (191)



DIMENSIONS

50 Cycle Performance Curves attached when applicable.

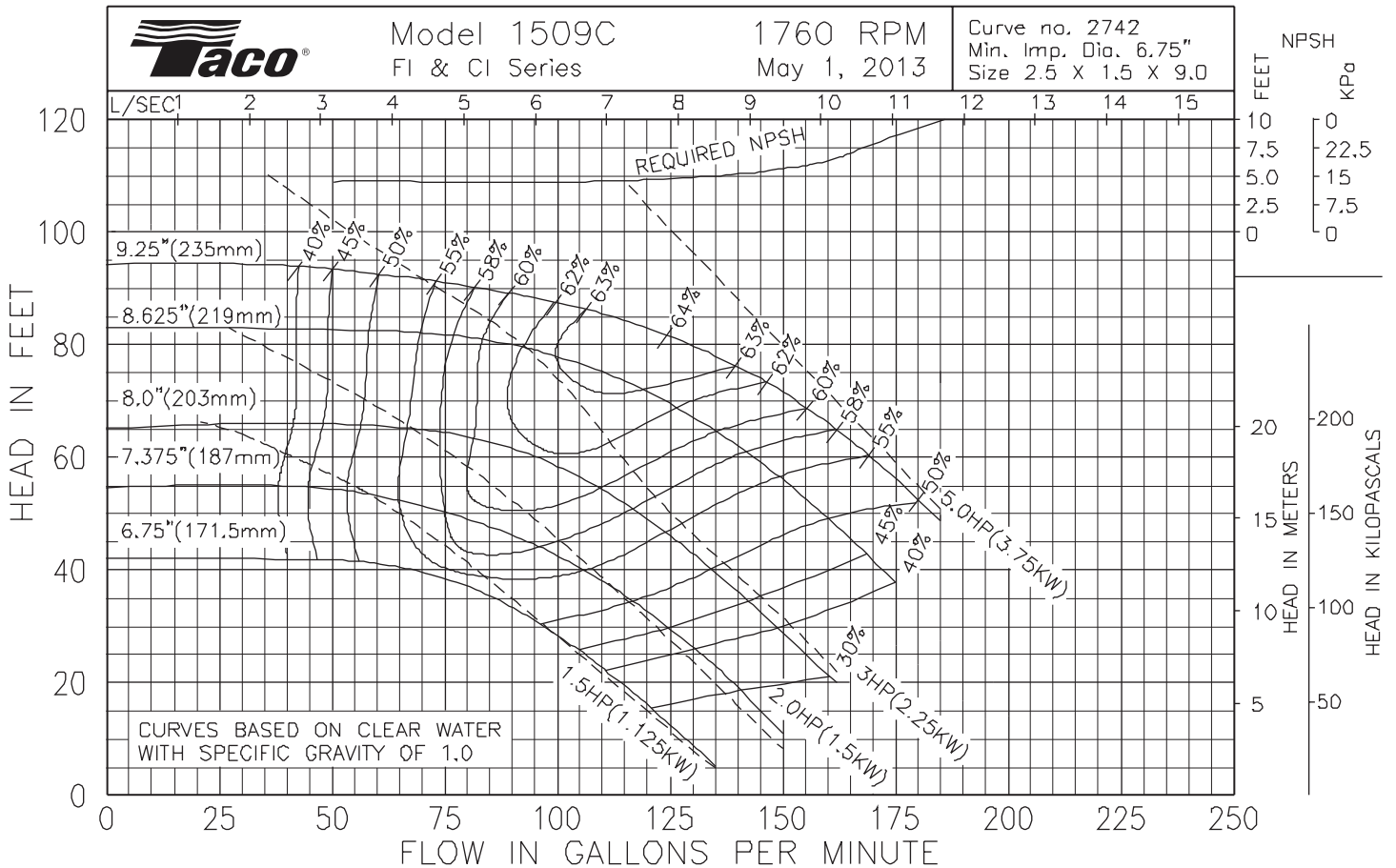
Model No. Flange Size (Suction x Discharge)	Motor Frame	HP 1760 (RPM)	A		B		C	D	E		F	G	J		K	N	P
			ANSI Class 125	ANSI Class 250	ANSI Class 125	ANSI Class 250			ANSI Class 125	ANSI Class 250			ANSI Class 125	ANSI Class 250			
1509C 2 1/2 x 1 1/2 (64 x 38)	145T	1.5	4.56 (116)	4.87 (124)	8.00 (203)	8.25 (210)	17.18 (436)	40.0 (1016)	1.73 (44)	1.42 (36)	11.28 (287)	13.00 (330)	17.98 (457)	18.29 (465)	15.68 (398)	2.00 (51)	36.0 (914)
		2					17.18 (436)	40.0 (1016)	1.73 (44)	1.42 (36)		13.00 (330)			15.68 (398)		36.0 (914)
	184T	3					17.18 (436)	40.0 (1016)	1.73 (44)	1.42 (36)		15.38 (391)			15.68 (398)		36.0 (914)
		5					17.18 (436)	40.0 (1016)	1.73 (44)	1.42 (36)		16.56 (421)			15.68 (398)		36.0 (914)

English dimensions are in inches. Metric dimensions are in millimeters. Metric data is presented in ().
 Do not use for construction purposes unless certified.

MATERIALS OF CONSTRUCTION

ITEM	BRONZE FITTED			ALL IRON		
	Standard Pump Construction		Optional	Standard Pump Construction		Optional
	125# Flange	250# Flange	125# or 250# Flange	125# Flange	250# Flange	125# or 250# Flange
Casing	Cast Iron ASTM A48/A48M-03 Class 30A	Ductile Iron ASTM A536-84 Grade 65-45-12	N/A	Cast Iron ASTM A48/A48M-03 Class 30A	Ductile Iron ASTM A536-84 Grade 65-45-12	N/A
Cover	Cast Iron ASTM A48/A48M-03 Class 30A	Ductile Iron ASTM A536-84 Grade 65-45-12	N/A	Cast Iron ASTM A48/A48M-03 Class 30A	Ductile Iron ASTM A536-84 Grade 65-45-12	N/A
Impeller	Bronze ASTM B584-98A C87500	Bronze ASTM B584-98A C87500	N/A	Cast Iron ASTM A48/A48M-03 Class 30A	Cast Iron ASTM A48/A48M-03 Class 30A	N/A
Wear Ring	N/A	N/A	Bronze ASTM B584-98A C92200	N/A	N/A	N/A
Shaft	Carbon Steel AISI 1045	Carbon Steel AISI 1045	Stainless Steel TYPE 416™™ or 410™™ ASTM A582	Carbon Steel AISI 1045	Carbon Steel AISI 1045	Stainless Steel TYPE 416™™ or 410™™ ASTM A582
Shaft Sleeve	Bronze ASTM B584-98A C92200	Bronze ASTM B584-98A C92200	Stainless Steel TYPE 303 ASTM A276	Stainless Steel TYPE 303 ASTM A276	Stainless Steel TYPE 303 ASTM A276	N/A
Mech. Seal	Ceramic/EPT	Ceramic/EPT	CF	Ceramic/EPT	Ceramic/EPT	CF
Seal Flush Line	N/A	N/A	Copper	N/A	N/A	Stainless Steel

CF - Consult Factory N/A - Not Available



Comments: _____

Taco Comfort Solutions™ A Taco Group Company
 Taco, Inc., 1160 Cranston Street, Cranston, RI 02920 | Tel: (401) 942-8000 | FAX: (401) 942-2360
 Taco (Canada), Ltd., 8450 Lawson Road, Suite #3, Milton, Ontario L9T 0J8 | Tel: (905) 564-9422 | FAX: (905) 564-9436
 Visit our web site: www.TacoComfort.com | Printed in USA | ©2015 Taco, Inc.